

BANGLADESH RESEARCH AND EDUCATION NETWORK

BdREN'S MONTHLY SERVICE DELIVERY REPORT

December 2023

Prepared by



BdREN Network Operations Center (NOC)

CONTENTS

1. COORDINATION ISSUES	4
2. LINK AVAILABILITY	4
➤ Public Universities:	4
➤ Private Universities:	5
➤ Medical Colleges and Universities:	5
➤ Research Institutes and Others:	5
➤ CEDP Colleges:	6
3. MAJOR OUTAGE OF December 2023	11
➤ Public Universities:	11
➤ Private Universities:	12
➤ Research Institute, Medical Universities and Others:	12
5. TOTAL TRAFFIC	13
➤ 5.1 Top Ten Institutions in Bandwidth Usage:	13
6. ONLINE EDUCATION	13
6.1 Institution Wise Video Conferencing Usage Statistics	13
➤ Public Universities and Colleges:	13
➤ Private Universities:	15
➤ Medical Colleges:	16
➤ Colleges:	16
➤ Research Institutes and Others:	16
6.2 Institution Wise Video Conferencing Usage Graph	18
6.4 BdREN Total Video Conferencing Usage Statistics	21
6.5 Top Ten Institutions in Video Conferencing	21
6.6 Month-wise Number of Classes, Total Class Hours and Participants	21
7. INSTITUTION WISE MAX HPC Allocation	22
8. ACRONYMS	24

LIST OF FIGURES

FIGURE 1: INSTITUTION WISE LINK AVAILABILITY CONSIDERING "PLANNED MAINTENANCE" AS NON-OUTAGE	7
FIGURE 2: INSTITUTION WISE LINK AVAILABILITY CONSIDERING "PLANNED MAINTENANCE" AS OUTAGE	9
FIGURE 3: COLLEGE-WISE LINK AVAILABILITY CONSIDERING "PLANNED MAINTENANCE" AS OUTAGE	10
FIGURE 4: PUBLIC UNIVERSITY VIDEO CONFERENCING USAGE GRAPH	18
FIGURE 5: PRIVATE UNIVERSITYS' VIDEO CONFERENCING USAGE GRAPH	19
FIGURE 6: RESEARCH INSTITUTE AND OTHERS INSTITUTIONS' VIDEO CONFERENCING USAGE GRAPH	20
FIGURE 7: MEDICAL COLLEGES' VIDEO CONFERENCING USAGE GRAPH	20
FIGURE 8: COLLEGES' VIDEO CONFERENCING USAGE GRAPH	21
FIGURE 9: MONTH WISE ZOOM USAGE GRAPH IN LAST ONE YEAR OF 2023	22
FIGURE 10: INSTITUTION WISE MAX HPS ALLOCATION	23

1. COORDINATION ISSUES

Processed **470** mail updates between BdREN NOC and member institution.

2. LINK AVAILABILITY

➤ Public Universities:

Table 1: Institution Wise Link Availability of public universities

Name of Institutes	Outage (In Minute)	Maintenance (Minute)	Availability (W/O Maintenance)	Availability (With Maintenance)
BAU	0	0	100.00%	100.00%
BDU	0	0	100.00%	100.00%
BoU	0	0	100.00%	100.00%
BRUR	0	0	100.00%	100.00%
BSMMU	0	0	100.00%	100.00%
BSMRAAU	0	0	100.00%	100.00%
BSMRAU	0	0	100.00%	100.00%
BSMRSTU	0	0	100.00%	100.00%
BU	0	0	100.00%	100.00%
BUBT	0	0	100.00%	100.00%
BUET	0	0	100.00%	100.00%
BUP	0	0	100.00%	100.00%
BUTex	0	0	100.00%	100.00%
CoU	0	0	100.00%	100.00%
CU	0	0	100.00%	100.00%
CUET	0	0	100.00%	100.00%
CVASU	0	0	100.00%	100.00%
DU	0	0	100.00%	100.00%
DUET	0	0	100.00%	100.00%
HAU	220	220	99.85%	99.85%
HSTU	0	0	100.00%	100.00%
IU	0	0	100.00%	100.00%
IUT	0	0	100.00%	100.00%
JKKNIU	0	0	100.00%	100.00%
JnU	0	0	100.00%	100.00%
JU	0	0	100.00%	100.00%
JUST	0	0	100.00%	100.00%
KU	0	0	100.00%	100.00%
KUET	0	0	100.00%	100.00%
MBSTU	0	0	100.00%	100.00%
MIST	0	0	100.00%	100.00%
NSTU	0	0	100.00%	100.00%
NU	0	0	100.00%	100.00%
NU DHANMONDI	0	0	100.00%	100.00%
NU SHUKRABAD	0	0	100.00%	100.00%
PSTU	0	0	100.00%	100.00%
PUST	0	0	100.00%	100.00%
RU	0	0	100.00%	100.00%
RUET	0	0	100.00%	100.00%
SAU	0	0	100.00%	100.00%
SBAU	0	0	100.00%	100.00%
SMU	0	0	100.00%	100.00%
SUST	0	0	100.00%	100.00%

➤ **Private Universities:**

Table 2: Institution Wise Link Availability of private universities.

Name of Institutes	Outage (In Minute)	Maintenance (Minute)	Availability (W/O Maintenance)	Availability (With Maintenance)
AUB	0	0	100.00%	100.00%
AUW	0	0	100.00%	100.00%
BARC	0	0	100.00%	100.00%
BRAC-Dhaka	0	0	100.00%	100.00%
BRAC-Ashulia	0	0	100.00%	100.00%
CCN	0	0	100.00%	100.00%
DIU	0	0	100.00%	100.00%
EU	0	0	100.00%	100.00%
IUB	0	0	100.00%	100.00%
IUBAT	142	142	99.68%	99.68%
LUS	0	0	100.00%	100.00%
MIU	0	0	100.00%	100.00%
NBIU	0	0	100.00%	100.00%
NSU	0	0	100.00%	100.00%
VU	0	0	100.00%	100.00%

➤ **Medical Colleges and Universities:**

Table 3: Institution Wise Link Availability of medical universities and colleges.

Name of Institutes	Outage (In Minute)	Maintenance (Minute)	Availability (W/O Maintenance)	Availability (With Maintenance)
CMC	0	0	100.00%	100.00%
CME	0	0	100.00%	100.00%
CoxBMC	0	0	100.00%	100.00%
DDC	0	0	100.00%	100.00%
DGHS	0	0	100.00%	100.00%
DMC	0	0	100.00%	100.00%
MAGOMC	0	0	100.00%	100.00%
MMC	0	0	100.00%	100.00%
NINMAS	0	0	100.00%	100.00%
RMC	0	0	100.00%	100.00%
RPMC	0	0	100.00%	100.00%
SBMC	0	0	100.00%	100.00%
SIRSMC	0	0	100.00%	100.00%
SSKMC	0	0	100.00%	100.00%
SSMC	0	0	100.00%	100.00%

➤ **Research Institutes and Others:**

Table 4: Institution Wise Link Availability of research institutes and others

Name of Institutes	Outage (In Minute)	Maintenance (Minute)	Availability (W/O Maintenance)	Availability (With Maintenance)
BARD	0	0	100.00%	100.00%
BARI	0	0	100.00%	100.00%
BFRI	0	0	100.00%	100.00%
BIDS	0	0	100.00%	100.00%
BJRI	0	0	100.00%	100.00%
BLRI	0	0	100.00%	100.00%
BMD	0	0	100.00%	100.00%

Name of Institutes	Outage (In Minute)	Maintenance (Minute)	Availability (W/O Maintenance)	Availability (With Maintenance)
BRRRI	0	0	100.00%	100.00%
ICMAB	0	0	100.00%	100.00%
SPARRSO	0	0	100.00%	100.00%

➤ **CEDP Colleges:**

Table 5: Institution Wise Link Availability of colleges under CEDP.

Name of Institutes	Outage (In Minute)	Maintenance (Minute)	Availability (W/O Maintenance)	Availability (With Maintenance)
Azam Khan Govt. Commerce College	0	0	100.00%	100.00%
Bandarban Government College	0	0	100.00%	100.00%
Barishal Govt. Women's College	0	0	100.00%	100.00%
Bhawal Badre Alam Govt. College	0	0	100.00%	100.00%
Brindaban Govt. College	0	0	100.00%	100.00%
Chandina Redwan Ahmed College	0	0	100.00%	100.00%
Chandpur Govt. College	0	0	100.00%	100.00%
Chandpur Govt. Mohila College	0	0	100.00%	100.00%
Chowmuhani Govt. S. A. College	0	0	100.00%	100.00%
Cox's Bazar City College	0	0	100.00%	100.00%
Cox's Bazar Govt. College	645	645	98.56%	98.56%
Cumilla Government Women's College	0	0	100.00%	100.00%
Cumilla Victoria Govt. College	0	0	100.00%	100.00%
Daulatpur College	0	0	100.00%	100.00%
Daulatpur Day/Night College	0	0	100.00%	100.00%
Dhaka City College	0	0	100.00%	100.00%
Dhaka Commerce College	0	0	100.00%	100.00%
Dinajpur Government College	0	0	100.00%	100.00%
Government Bm College	0	0	100.00%	100.00%
Government City College	0	0	100.00%	100.00%
Government Debendra College	0	0	100.00%	100.00%
Government Sundarban Adarsha College	1404	1404	96.85%	96.85%
Govt. Ashek Mahmud College	0	0	100.00%	100.00%
Govt. B.L. College	0	0	100.00%	100.00%
Govt. Bangabandhu College	0	0	100.00%	100.00%
Govt. Barishal College	0	0	100.00%	100.00%
Govt. Begum Rokeya College	0	0	100.00%	100.00%
Govt. BMC Women's College	0	0	100.00%	100.00%
Govt. G.B.G. College	0	0	100.00%	100.00%
Govt. H. S. S. College	0	0	100.00%	100.00%
Govt. Mujibur Rahman Women's College	0	0	100.00%	100.00%
Govt. P. C. College	0	0	100.00%	100.00%
Govt. Rashidazzoha Womens College	0	0	100.00%	100.00%
Govt. Shah Sultan College	0	0	100.00%	100.00%
Govt. Syed Hatem Ali College	0	0	100.00%	100.00%
Govt. Zaheda Safir Mohila College	0	0	100.00%	100.00%
Govt. Zia Mohila College	0	0	100.00%	100.00%
Govt. Zillur Rahman Mohila College	0	0	100.00%	100.00%
Gurudayal Government College	0	0	100.00%	100.00%
Habibullah Bahar College	0	0	100.00%	100.00%
Ishwardi Govt.College	0	0	100.00%	100.00%

Name of Institutes	Outage (In Minute)	Maintenance (Minute)	Availability (W/O Maintenance)	Availability (With Maintenance)
Islamia Govt. College	0	0	100.00%	100.00%
Jashore Govt. Mohila College	0	0	100.00%	100.00%
Jessore Govt. City College	0	0	100.00%	100.00%
Jhalakathi Govt. College	0	0	100.00%	100.00%
Kadirdi College	0	0	100.00%	100.00%
Kazi Mohammad Shafiqul Islam College	0	0	100.00%	100.00%
Khilgaon Model College	0	0	100.00%	100.00%
Khulna Govt. Mohila College	0	0	100.00%	100.00%
Kishoreganj Govt. Mohila College	0	0	100.00%	100.00%
Kumira Mahila Degree College	0	0	100.00%	100.00%
Mohammadpur Kendriya College	0	0	100.00%	100.00%
Mohammadpur Mohila College	0	0	100.00%	100.00%
Moulvibazar Government College	0	0	100.00%	100.00%
Muminunnesa Govt. Mohila College	0	0	100.00%	100.00%
Naogaon Govt. College	0	0	100.00%	100.00%
Narail Govt. Victoria College	0	0	100.00%	100.00%
Narayanganj College	0	0	100.00%	100.00%
Narsingdi Govt. College	0	0	100.00%	100.00%
Nawabganj Govt. College	0	0	100.00%	100.00%
Netrakona Govt. College	0	0	100.00%	100.00%
New Govt. Degree College	0	0	100.00%	100.00%
Nilphamari Govt. College	0	0	100.00%	100.00%
Patiya Govt. College	0	0	100.00%	100.00%
Puran Bazar Degree College	0	0	100.00%	100.00%
Rajshahi College	0	0	100.00%	100.00%
Rajshahi Government Mahila College	692	692	98.45%	98.45%
Rajshahi Govt. City College	0	0	100.00%	100.00%
Rangamati Government College	1639	1639	96.33%	96.33%
Rangpur Government College	0	0	100.00%	100.00%
Rani Bhawani Govt. Women's College	0	0	100.00%	100.00%
Ranisankail Degree College	0	0	100.00%	100.00%
Sakhipur Residential Mahila College	0	0	100.00%	100.00%
Satkhira Govt. College	0	0	100.00%	100.00%
Satkhira Govt. Mahila College	0	0	100.00%	100.00%
Shahid Smriti Govt. College	0	0	100.00%	100.00%
Shaikh Burhanuddin Post Graduate College	0	0	100.00%	100.00%
Siddheswari College	0	0	100.00%	100.00%
Siddheswari Girls' College	0	0	100.00%	100.00%
Syed Ahmed College	0	0	100.00%	100.00%
Tejgaon College	0	0	100.00%	100.00%
Tongi Govt. College	0	0	100.00%	100.00%
University Women's Federation College	0	0	100.00%	100.00%
Uttar Bangla College	1464	1464	96.72%	96.72%

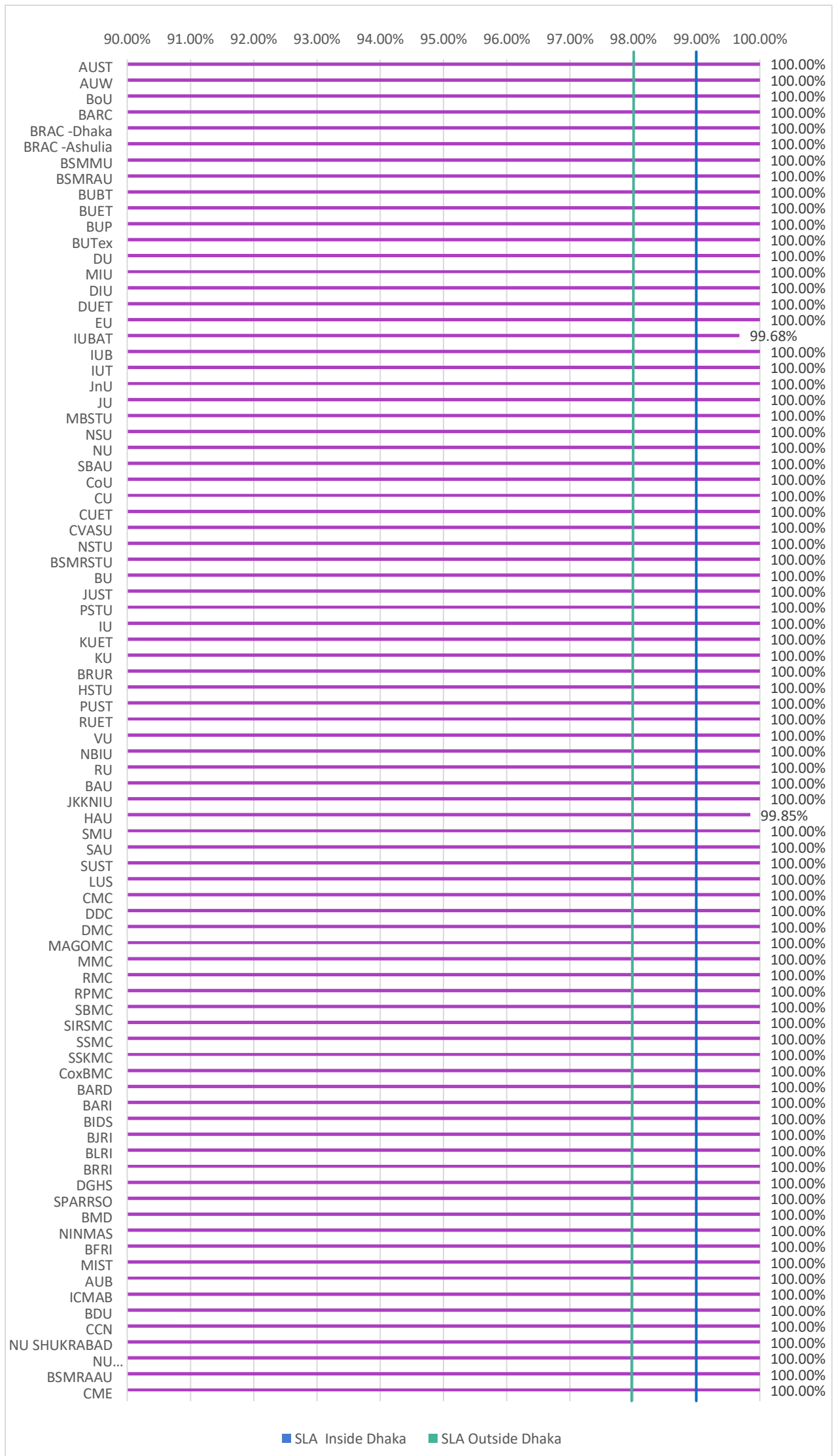


Figure 1: Institution Wise Link Availability considering "Planned Maintenance" as non-ou tage

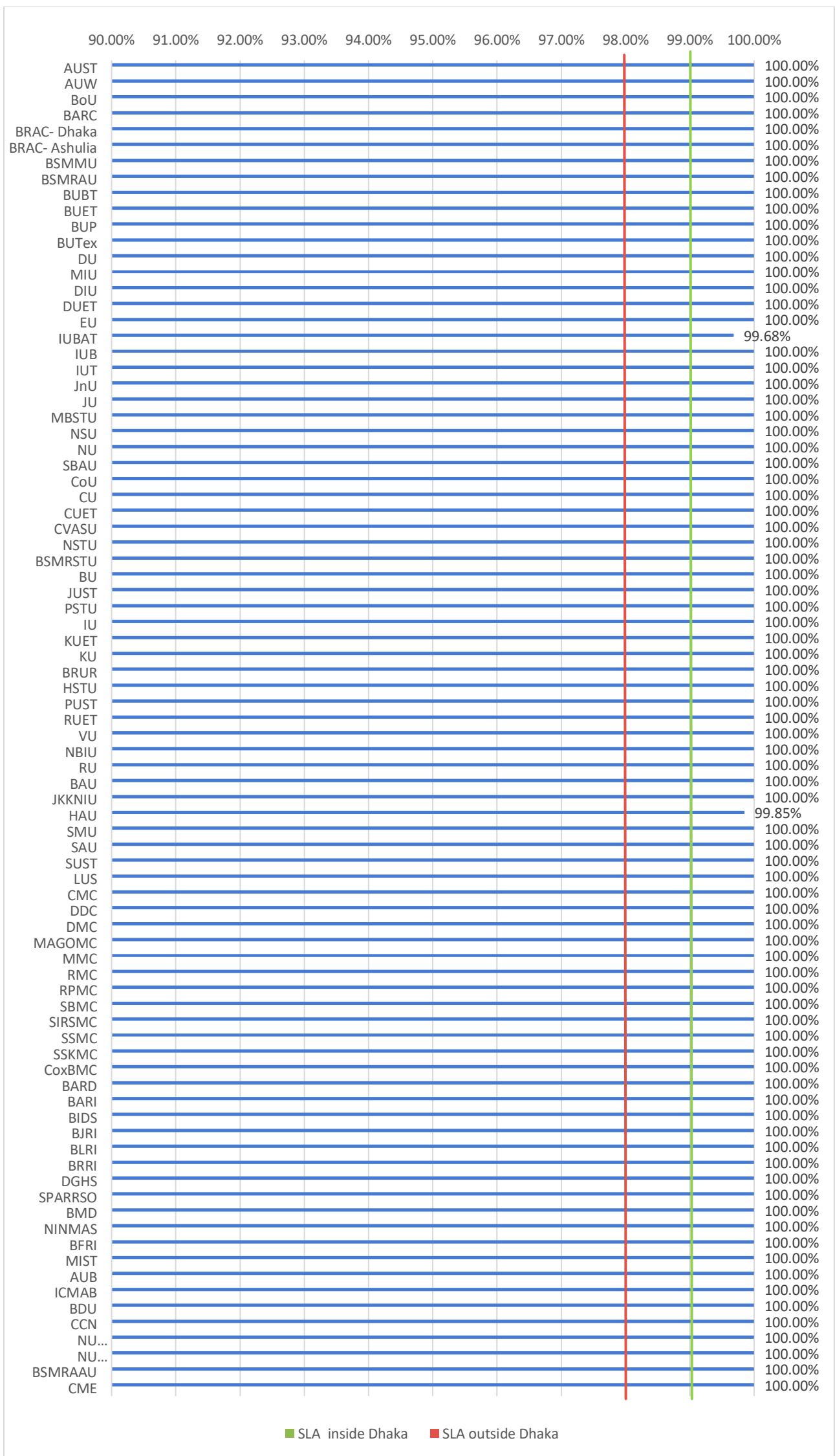


Figure 2: Institution Wise Link Availability considering “Planned Maintenance” as outage

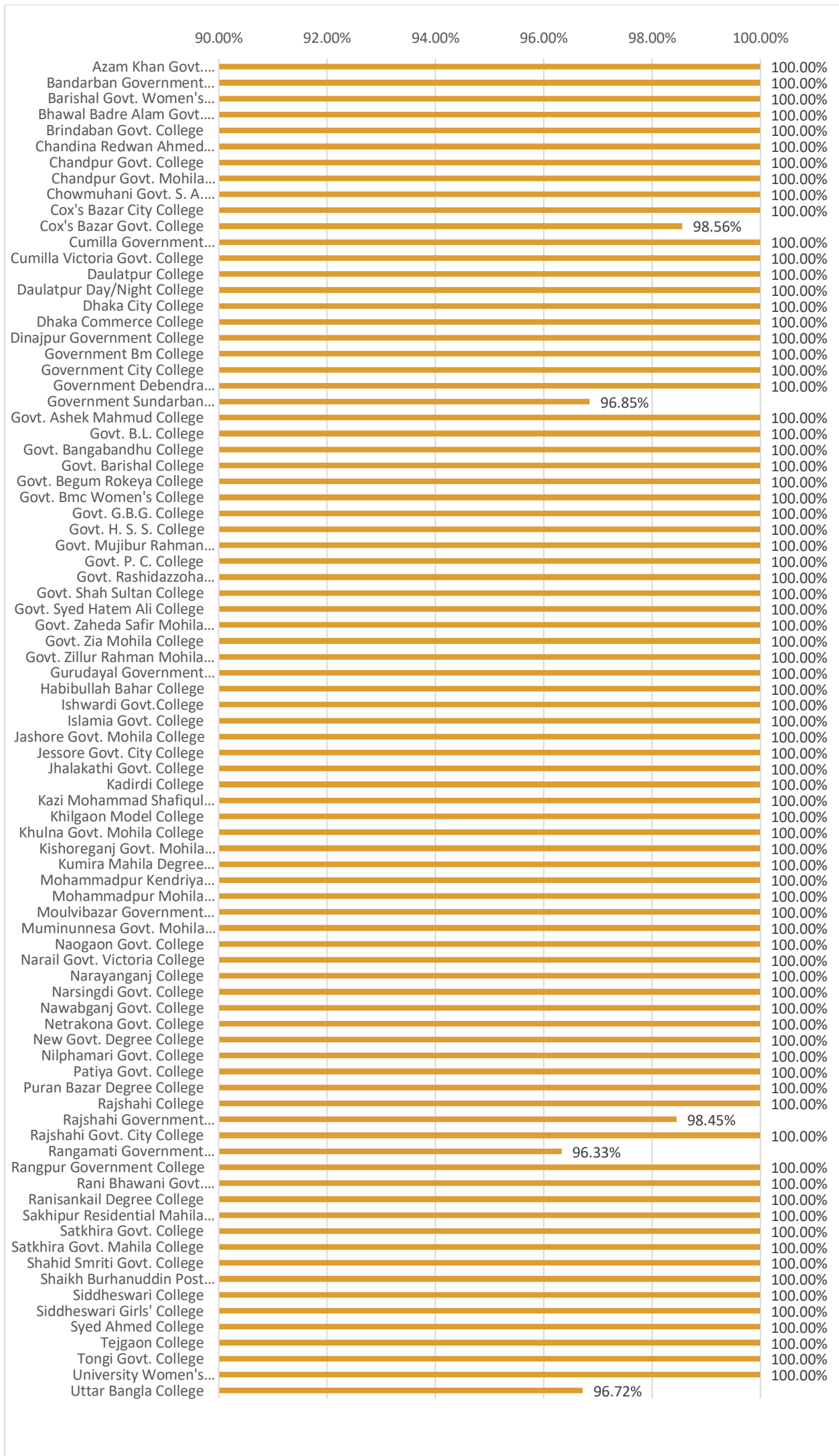


Figure 3: College-Wise Link Availability considering “Planned Maintenance” as outage

3. MAJOR OUTAGE OF December 2023

❖ Ticket# 231211-0001

Affected Member : HAU
Recovery Time : 220
SLA Compliance : Fulfilled
Problem Details : The link was down due to BTCL backbone down at Sylhet region. BTCL restored their fiber and then link is up.

❖ Ticket# 231211-0003

Affected Member : IUBAT
Recovery Time : 142
SLA Compliance : Fulfilled
Problem Details : The primary link experienced a disruption due to a fiber break in the overhead (OH) infrastructure near Tongi Kamarpara bus stand. Simultaneously, the secondary link encountered a fiber break approximately 4 kilometers away from IUBAT, attributed to drain maintenance activities conducted by the local authorities.

4. TRAFFIC STATISTICS

➤ Public Universities:

Table 5: Institution Wise Traffic Statistics of public universities

INSTITUTION	TOTAL TRAFFIC		AVERAGE BW		MAXIMUM BW	
	IN (TB)	OUT (TB)	IN (Mbps)	OUT (Mbps)	IN (Mbps)	OUT (Mbps)
BAU	544.19	45.64	1600	131.64	2820	243.5
BDU-Dhaka	0.94	0.12	2.8	0.34	21.35	13.19
BDU-Kalikor	14.13	3.1	42.22	9.26	166.97	55.36
BOU	25.91	20.69	77.81	62.12	470.91	224.72
BRUR	59.78	4.78	177.82	14.24	516.36	49.6
BSMMU	70.14	14.9	209.48	44.5	580.29	114.91
BSMRAAU	2.26	0.26	6.76	0.79	45.54	9.71
BSMRAAU Lalmonirhat	7.93	0.53	23.68	1.57	120.21	12.69
BSMRAU	150.03	21.45	362.89	47.73	734.56	251.61
BSMRSTU	34.77	3.4	103.85	10.15	275.8	59.17
BU	106.27	12.25	317.41	36.59	684.47	81.47
BUET	462.79	70.92	1380	211.83	2680	469.6
BUP	35.56	5.58	81.12	8.14	267.09	36.58
BUTex	27.53	2.74	82.24	8.17	172.43	31.29
CoU	106.06	12.48	269.61	27.22	559.59	86.23
CU	162.41	16.7	256.58	26.76	624.52	93.74
CUET	237.31	21.77	686.18	64.96	1360	162.74
CVASU	127.5	10.66	245.43	21.36	431.66	75
DU	533.13	53.35	1590	159.34	3000	361.43
DUET	105.02	9.46	313.67	28.39	719.08	91.31
HSTU	15.77	1.6	47.35	4.81	196.79	103.25
IU	268.33	24.68	511.07	46.46	1100	141.49
JKKNIU	17.24	1.42	51.48	4.24	188.86	29.06
JNU	54.76	5.32	163.55	15.89	471.75	56.78
JU	93.22	8.81	278.43	26.3	635.16	116.86
JUST	123.65	14.54	569.69	134.89	245.84	28.65
KU	34.1	3.71	101.86	11.08	322.25	77.17

INSTITUTION	TOTAL TRAFFIC		AVERAGE BW		MAXIMUM BW	
	IN (TB)	OUT (TB)	IN (Mbps)	OUT (Mbps)	IN (Mbps)	OUT (Mbps)
KUET	282.09	37.68	842.57	112.54	1680	235.12
MBSTU	95.73	7.21	286.44	21.63	608.01	49.42
MIST	16.02	2.95	47.97	8.85	104.54	30.46
NSTU	49.19	4.66	146.91	13.93	406.65	48.5
NU	23.96	8.48	71.95	25.47	303.88	192.63
NU Dhaka	1.98	0.32	5.93	0.94	64.48	20.47
NU Sukrabad	0.16	0.02	0.47	0.06	8.95	5.87
PSTU	155.22	17.02	463.63	50.83	1010	170.42
PUST	36.01	3.39	107.54	10.13	428.9	48.29
RU	109.74	71.44	327.79	213.38	834.2	929.27
RUET	143.92	16.62	429.86	49.65	939.83	174.49
SAU	83.66	7.08	249.87	21.14	448.09	56.19
SBAU	63.64	5.71	190.08	17.05	385.29	42.21
SMU	1.7	0.12	5.08	0.35	36.93	4.04
SUST	236.84	23.07	707.42	68.92	1430	154.66

➤ **Private Universities:**

Table 6: Institution Wise Traffic Statistics of private universities

INSTITUTION	TOTAL TRAFFIC		AVERAGE BW		MAXIMUM BW	
	IN (TB)	OUT (TB)	IN (Mbps)	OUT (Mbps)	IN (Mbps)	OUT (Mbps)
AUB	4.46	0.49	13.34	1.47	64.7	9.08
AUST	3.43	0.47	10.26	1.4	92.52	14.2
AUW	52.99	4.98	158.27	14.89	315.74	35.63
BAUST	0.17	0.02	0.51	0.06	7.69	4.39
BRACU-DHAKA	0.98	0.04	2.93	0.13	147.96	16.25
BRACU-ASHULIA	1.09	0.28	2.72	0.82	131.42	14.29
BUBT	0.82	0.05	2.45	0.15	47.56	1.88
CCN	3.16	0.27	9.44	0.81	32.73	7.7
DIU	56.66	423.53	169.14	1260	419.84	2840
EU	8.96	1.42	27.27	4.35	101.54	35
EWU	0	0	0	0	0	0
IUBAT	7.73	1.06	23.79	3.27	211.87	32.97
IUT	80.84	10.42	242.1	31.19	541.75	98.75
KUAU	0.45	0.03	1.36	0.95	7.99	1.31
LU	5.66	4.44	16.92	13.27	81.06	40.86
NBIU	1.61	0.09	4.81	0.27	43.7	3.66
NSU	.039	.004	.11	.012	4.77	4.77
VU	.061	.015	0.18	.046	6.40	3.35

➤ **Research Institute, Medical Universities and Others:**

Table 7: Institution Wise Traffic Statistics of other institutes

INSTITUTION	TOTAL TRAFFIC		AVERAGE BW		MAXIMUM BW	
	IN (TB)	OUT (TB)	IN (Mbps)	OUT (Mbps)	IN (TB)	OUT (TB)
BARC	2.83	0.56	8.45	1.69	57.24	34.39
BARI	9.22	2.6	27.54	7.77	157.44	122.33
BFRI	2.42	0.17	7.24	0.53	29.58	19.69
BIDS	0	0	0	0	0	0
BJRI	0.23	0.02	0.69	0.06	38.53	3.4
BLRI	12.64	1.14	37.75	3.41	116.79	20.33

INSTITUTION	TOTAL TRAFFIC		AVERAGE BW		MAXIMUM BW	
	IN (TB)	OUT (TB)	IN (Mbps)	OUT (Mbps)	IN (TB)	OUT (TB)
BRRRI	8.49	1.1	25.43	3.31	119.19	20.31
CME	0.32	0.04	0.96	0.012	12.39	5.35
ICMAB	3.93	2.45	11.75	7.32	127.96	39.63
Ninmas	.004	0.00002	.012	0.0007	1.64	.038

5. TOTAL TRAFFIC

Table 8: Total Traffic (used by clients)

Total Download	4989.88 TB
Total Upload	1052.33 TB

➤ 5.1 Top Ten Institutions in Bandwidth Usage:

Table 9: Bandwidth Usage of Top Ten Institutions

INSTITUTION	TOTAL TRAFFIC		AVERAGE BW		MAXIMUM BW	
	IN(TB)	OUT(TB)	IN(Mbps)	OUT(Mbps)	IN (Mbps)	OUT(Mbps)
BAU	544.19	45.64	1600	131.64	2820	243.5
DU	533.13	53.35	1590	159.34	3000	361.43
BUET	462.79	70.92	1380	211.83	2680	469.6
KUET	282.09	37.68	842.57	112.54	1680	235.12
IU	268.33	24.68	511.07	46.46	1100	141.49
CUET	237.31	21.77	686.18	64.96	1360	162.74
SUST	236.84	23.07	707.42	68.92	1430	154.66
CU	162.41	16.7	256.58	26.76	624.52	93.74
PSTU	155.22	17.02	463.63	50.83	1010	170.42
BSMRAU	150.03	21.45	362.89	47.73	734.56	251.61

6. ONLINE EDUCATION

6.1 Institution Wise Video Conferencing Usage Statistics

➤ Public Universities and Colleges:

Table 10: Video Conferencing Usage by Public Universities and Colleges

Name of The Institution	Total Classes	Total Hours (hr:mm:ss)	Total Participants
Bangabandhu Digital University (BDU)	43	46:31:45	3141
Bangabandhu Sheikh Mujib Medical University (BSMMU)	52	62:41:51	508
Bangabandhu Sheikh Mujibur Rahman Agricultural University	40	46:26:30	2102
Bangabandhu Sheikh Mujibur Rahman Maritime University	27	32:18:47	1885

Name of The Institution	Total Classes	Total Hours (hr:mm:ss)	Total Participants
Bangladesh Agricultural University (BAU)	43	57:50:52	1439
Bangladesh Open University (BOU)	1	2:17:00	92
Bangladesh University of Engineering & Technology (BUET)	22	38:41:50	846
Bangladesh University of Professionals (BUP)	229	250:35:14	13023
Bangladesh University of Textiles (BUTEX)	289	349:36:50	9912
Barishal University (BU)	238	300:08:56	9343
Begum Rokeya University, Rangpur (BRUR)	1488	1489:35:55	16659
BSFMSTU	48	64:09:48	359
BSMRAAU	738	928:40:58	36975
BSMRSTU	114	116:00:47	12446
Chandpur Science and Technology University (CSTU)	181	211:30:50	8452
Chittagong University of Engineering & Technology (CUET)	32	38:49:00	1360
Chittagong Veterinary and Animal Sciences University (CVASU)	80	94:46:59	966
Comilla University (CoU)	214	226:21:49	13117
Comilla Victoria Government College	9	10:12:12	275
Dhaka University of Engineering & Technology (DUET)	400	429:32:14	6634
Faridpur Engineering College, Faridpur	42	47:00:39	1087
Habiganj Agricultural University (HAU)	242	255:10:27	10178
Hajee Mohammad Danesh Science & Technology University (HSTU)	252	268:22:46	4480
Islamic University, Bangladesh (IU)	21	24:12:50	491
Jagannath University (JnU)	252	268:22:46	4480
Jahangirnagar University (JU)	21	24:12:50	491
Jashore University of Science and Technology (JUST)	74	63:50:01	3997
Jatiya Kabi Kazi Nazrul Islam University (JKKNIU)	4	3:32:59	47
Khulna Agricultural University (KAU)	2	2:39:27	11
Khulna University (KU)	253	308:22:27	12711
Khulna University of Engineering & Technology (KUET)	180	186:26:51	4549
Kurigram Agricultural University (KAU)	123	153:05:16	4569
Lalmatia Mohila College	998	1142:58:54	63417
Mawlana Bhashani Science and Technology University (MBSTU)	443	475:44:11	17955
Mymensingh Engineering College	247	261:31:52	6239
National Institute of Textile Engineering and Research (NITER)	31	34:11:25	1113
National University (NU)	30	38:01:56	1059
Noakhali Science and Technology University (NSTU)	11	11:17:00	62
Pabna University of Science and Technology (PUST)	163	183:23:23	3047
Patuakhali Science and Technology University (PSTU)	234	252:38:37	5015
Rabindra University, Bangladesh (RUB)	180	168:02:44	6313
Rajshahi Medical University	320	375:01:52	8775
Rajshahi University of Engineering & Technology (RUET)	4	5:13:00	384
Rangamati Science and Technology University (RMSTU)	41	39:49:00	2089
Royal University of Dhaka	461	1268:44:35	44810
Shahjalal University of Science and Technology (SUST)	340	365:46:16	11993
Sheikh Hasina University (SHU)	98	96:59:23	3687
Sher-e-Bangla Agricultural University (SBAU)	285	312:18:22	21796
Sunamgonj Science and Technology University (SSTU)	8	6:13:00	147
Sylhet Agricultural University (SAU)	304	302:01:42	7563
UGC	27	24:36:40	899
University of Barisal (BU)	493	517:32:46	16480
University of Chittagong (CU)	5	9:19:00	61
University of Dhaka (DU)	1	1:18:00	111

Name of The Institution	Total Classes	Total Hours (hr:mm:ss)	Total Participants
University of Rajshahi (RU)	73	84:37:11	2939

➤ **Private Universities:**

Table 11: Video Conferencing Usage by Private Universities

Name of The Institution	Total Classes	Total Hours (hr:mm:ss)	Total Participants
Ahsanullah University of Science and Technology (AUST)	2658	3249:36:17	136346
Asian University For Women (AUW)	75	101:11:34	528
Asian University of Bangladesh (AUB)	69	89:12:49	1446
Atish Dipankar University of Science and Technology	66	93:10:00	3578
Bangladesh Army University of Science and Technology (BAUST)	32	41:33:19	321
Bangladesh Islami University (BIU)	44	41:20:00	539
Bangladesh University of Business and Technology (BUBT)	12	17:37:28	518
Bangladesh University of Health Sciences	173	188:44:02	3406
Bangladesh University of Health Sciences – BUHS	7	3:50:48	32
BGC Trust University Bangladesh	3	2:40:42	57
BGMEA University of Fashion & Technology	48	57:44:00	1502
BGMEA University of Fashion & Technology	6	5:31:13	87
BRAC University	1750	2323:06:48	67451
Canadian University of Bangladesh	63	65:19:48	1490
Chittagong Independent University (CIU)	10	10:52:50	59
Chittagong Independent University (CIU), A. vSession	4	5:50:14	60
City University	89	101:56:15	1519
Daffodil International University	59	85:43:43	2889
Dhaka International University (DIU)	869	902:53:15	35550
East West University (EWU)	28	46:35:12	2196
Eastern University	119	119:56:19	3564
European University of Bangladesh	175	191:11:01	5568
EXIM Bank Agricultural University Bangladesh	9	8:21:12	48
Feni University	34	32:44:00	511
Gono Bishwabidyalay	107	102:05:59	2758
Gono Bishwabidyalay	22	34:07:04	462
Green University of Bangladesh	3361	3935:07:27	147126
Independent University, Bangladesh	24	23:50:14	694
International Islamic University Chittagong (IIUC)	710	817:00:09	20341
International Standard University (ISU)	117	165:59:17	3794
International University of Business Agriculture and Technology	273	347:18:51	14161
Islami Arabic University	19	11:25:39	136
Islamic University of Technology (IUT)	187	207:35:44	5603
Leading University, Sylhet	187	264:25:00	5109
Manarat International University	145	165:36:01	3865
Military Institute of Science and Technology (MIST)	457	654:52:22	8523
North East University Bangladesh	2	0:38:00	10
North South University	73	106:46:06	1636
Northern University of Business & Technology Khulna	47	56:00:59	1188
Notre Dame University Bangladesh	151	162:15:00	730
Port City international University	61	94:21:51	1225
Premier University, Chittagong	115	142:08:57	3700
Presidency University	62	65:51:01	1702
Primeasia University	441	401:54:03	8692
Pundra University of Science & Technology	17	32:12:00	649
Rabindra Maitree University	26	20:55:00	836

Name of The Institution	Total Classes	Total Hours (hr:mm:ss)	Total Participants
Royal University of Dhaka (RUD)	24	29:19:36	234
RTM Al Kabir Technical University (RTM-AKTU)	11	20:39:20	244
Shanto-Mariam University of Creative Technology	303	358:54:01	8741
Sonargaon University (SU)	248	305:44:58	10561
Stamford University Bangladesh	130	138:50:30	2031
State University of Bangladesh	147	175:26:00	4756
The International University of Scholars	104	100:42:00	3146
The Millennium University	2	0:42:02	10
UCSI University Bangladesh	2	1:33:13	18
United International University (UIU)	680	951:24:07	23920
University of Asia Pacific	100	192:38:10	2559
University of Information Technology and Sciences (UITS)	26	28:04:00	463
University of Liberal Arts Bangladesh (ULAB)	83	123:28:54	3284
University of Science and Technology Chittagong (USTC)	20	24:17:01	76
University of South Asia	61	72:11:01	2302
Varendra University	25	42:36:00	1702
World University	10	7:24:00	800
World University Bangladesh (WUB)	381	353:38:13	12400
WUB	9	12:10:02	100
Znrf University of Management science	28	45:20:00	636

➤ Medical Colleges:

Table 12: Video Conferencing Usage by Medical Colleges

Name of The Institution	Total Classes	Total Hours (hr:mm:ss)	Total Participants
ICDDRDB	12	15:43:50	101
Rangpur Community Medical College & Hospital (RCMC)	5	8:12:24	23
Sheikh Sayera Khatun Medical College, Gopalganj	6	1:36:38	14
Sher-e-Bangla Medical College, Barisal	5	4:45:54	103

➤ Colleges:

Table 13: Video Conferencing Usage by Colleges

Name of The Institution	Total Classes	Total Hours (hr:mm:ss)	Total Participants
Barishal Cadet College (BCC)	1	1:25:11	8
Cumilla Cadet College	26	44:26:14	100
Dr. M.A Wazed Miah Textile Engineering College	6	2:46:06	207
Eden Mohila College	26	24:49:56	2227
Joypurhat Girls Cadet College	9	10:20:26	186
Notre Dame College, Dhaka	14	18:53:52	211
Rajshahi Cadet College	58	118:29:17	1211

➤ Research Institutes and Others:

Table 14: Video Conferencing Usage by Research institutes and Others

Name of The Institution	Total Classes	Total Hours (hr:mm:ss)	Total Participants
ABC Center for HR Development	4	8:12:52	90
AIRD	7	6:13:20	52
ASSET Project	11	19:50:17	1186
BAC	9	7:19:56	746
BANBEIS	3	2:10:00	93
Bangabangdhu Textile Engineering College	7	8:46:00	892

Name of The Institution	Total Classes	Total Hours (hr:mm:ss)	Total Participants
Bangladesh Academy for Securities Markets - BASM	26	26:39:00	671
Bangladesh Agricultural Research Council [BARC]	15	27:25:19	172
Bangladesh Agricultural Research Institute (BARI)	27	53:19:34	2491
Bangladesh Fisheries Research Institute (BFRI)	2	5:45:59	25
Bangladesh Institute of Capital Market (BICM)	22	48:08:31	567
Bangladesh Institute of Development Studies	24	55:55:40	713
Bangladesh Institute of Management (BIM)	243	380:49:22	15520
Bangladesh Institute of Nuclear Agriculture (BINA)	10	21:49:00	453
Bangladesh Research and Education Network (BdREN)	16	44:03:00	2353
Bangladesh Rice Research Institute (BRRI)	23	48:15:10	473
Bangladesh Securities & Exchange Commission (BSEC)	11	23:46:12	557
Bangladesh Society of Medical Microbiologists	10	9:30:33	96
Bangladesh Sugar & Food Industries Corporation (BSFIC)	24	25:12:58	322
BARD	11	1:53:09	27
BdREN	87	80:51:52	792
BJRI	11	28:09:07	208
BPC Training Center	6	4:50:29	68
BTCL	5	7:08:28	177
Customs Intelligence & Investigation Directorate	3	1:30:39	19
Data Edge	128	522:06:59	894
Department of Telecommunications	2	2:08:12	85
Directorate of Inspection & Audit, Ministry of Education	2	6:40:53	496
Directorate of Technical Education	5	9:24:07	733
Express Systems Limited	7	5:31:19	27
Faith Bangladesh	18	16:04:34	84
fDLuDCf	17	17:12:02	203
Government Organization	30	37:59:01	1189
Govt. Office	9	12:27:17	172
IBA-SEIP	10	36:16:22	1230
Ibrahim Medical College, Dhaka	4	5:40:00	37
ICMAB	47	93:02:42	429
IEDCR	8	13:04:34	197
Institute of Chartered Secretaries of Bangladesh (ICSB)	72	138:42:27	2057
Kazla Technologies Limited	1	0:51:50	18
Local Government Engineering Department (LGED)	1	1:12:05	121
Ministry of Education	27	59:12:15	3316
National Board Of Revenue [NBR]	23	43:40:22	2090
NIPORT	19	20:09:56	801
North East Medical College (NEMC)	6	3:40:00	18
Others	817	919:37:51	16511
PMEAT	10	38:14:13	2208
Shaikh Burhanuddin Post Graduate College	1	2:47:00	31
Spectrum Engineering Consortium Limited	52	74:14:56	272
SPFMS	50	70:06:55	552
Sylhet Engineering College (SEC)	22	27:02:00	936
Technical Teachers' Training College	3	10:06:00	44
TMSS Medical College	21	28:13:59	834

6.2 Institution Wise Video Conferencing Usage Graph

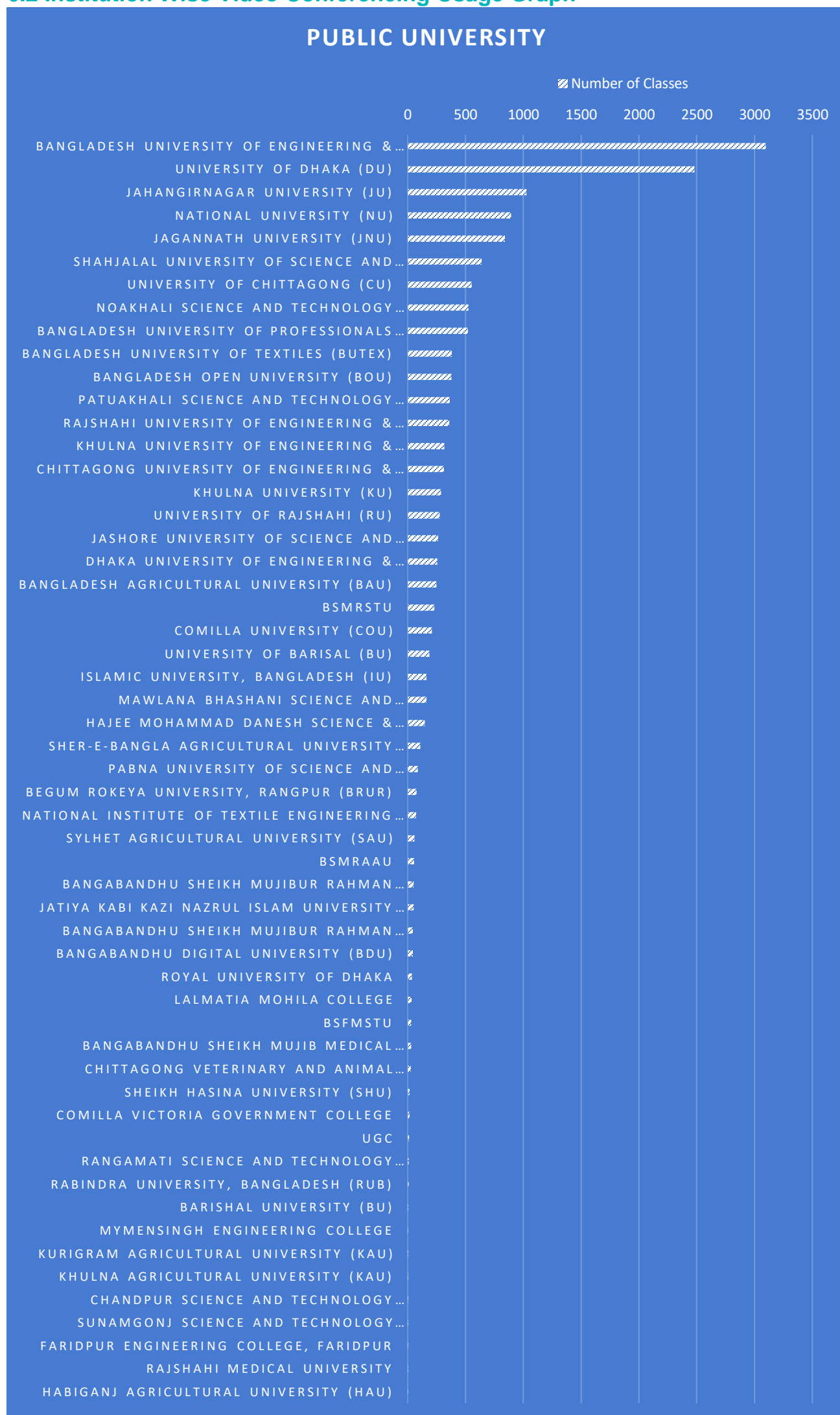


Figure 4: Public University Video Conferencing Usage Graph

PRIVATE UNIVERSITY

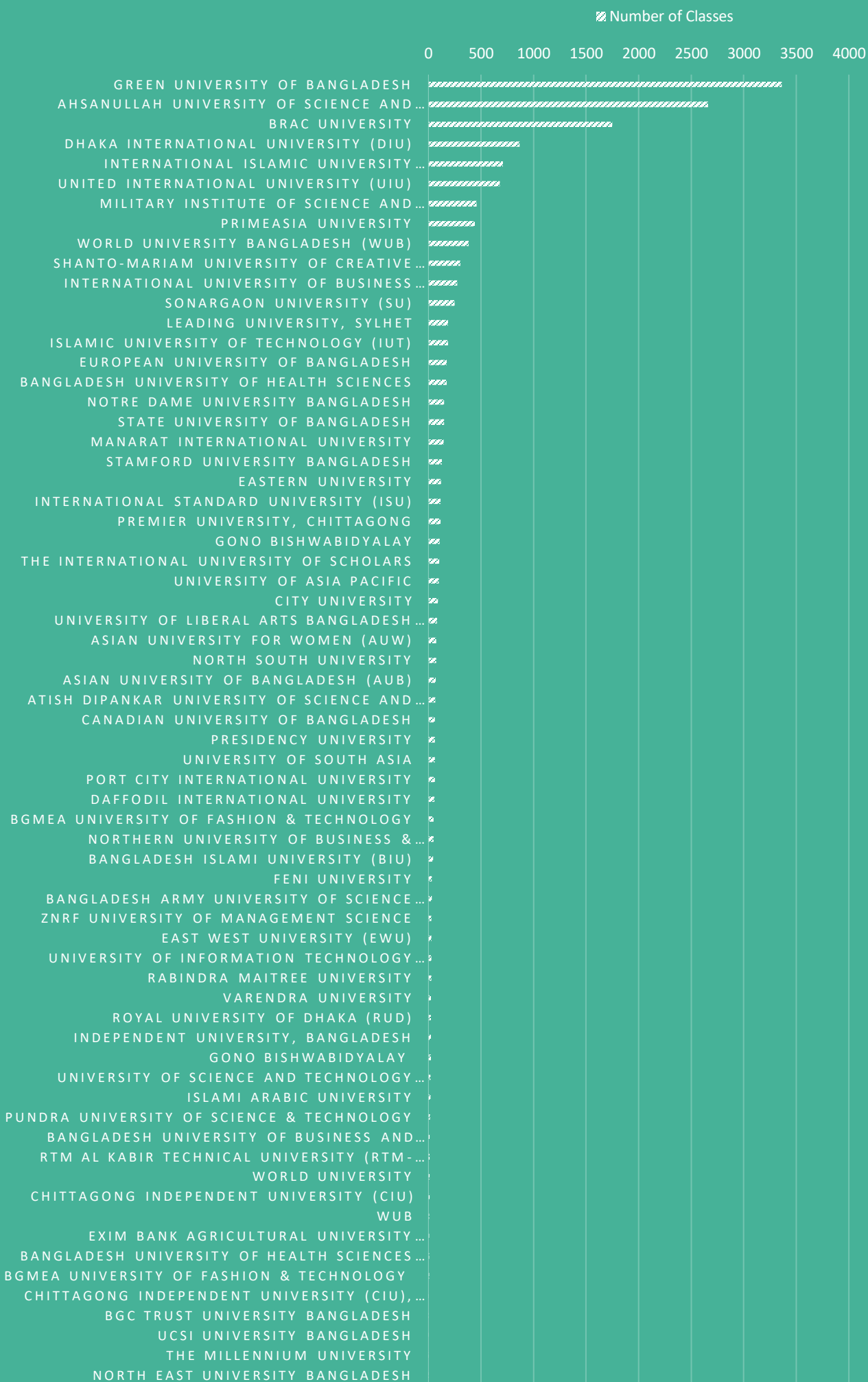


Figure 5: Private Universitys' Video Conferencing Usage Graph

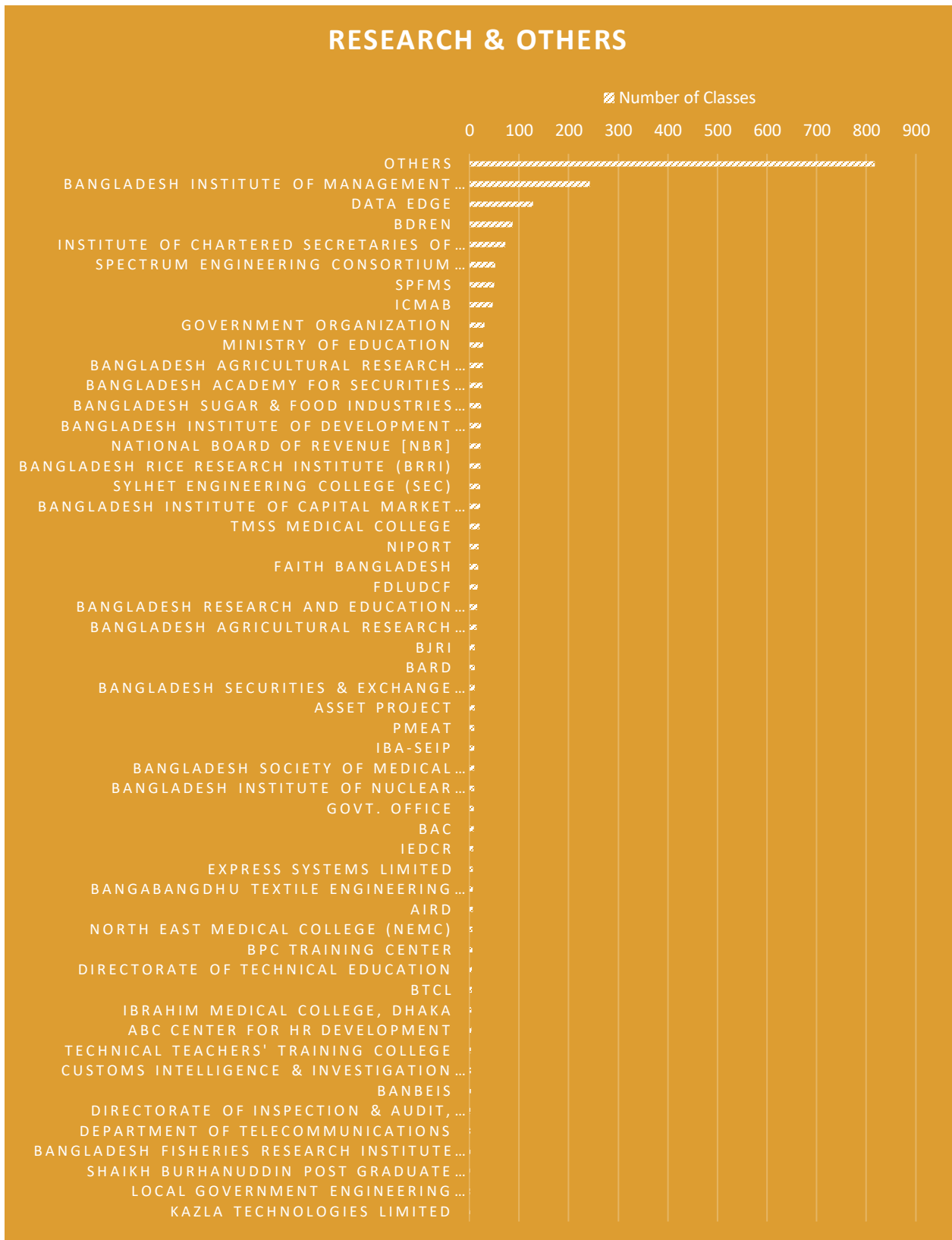


Figure 6: Research Institute and Others Institutions' Video Conferencing Usage Graph

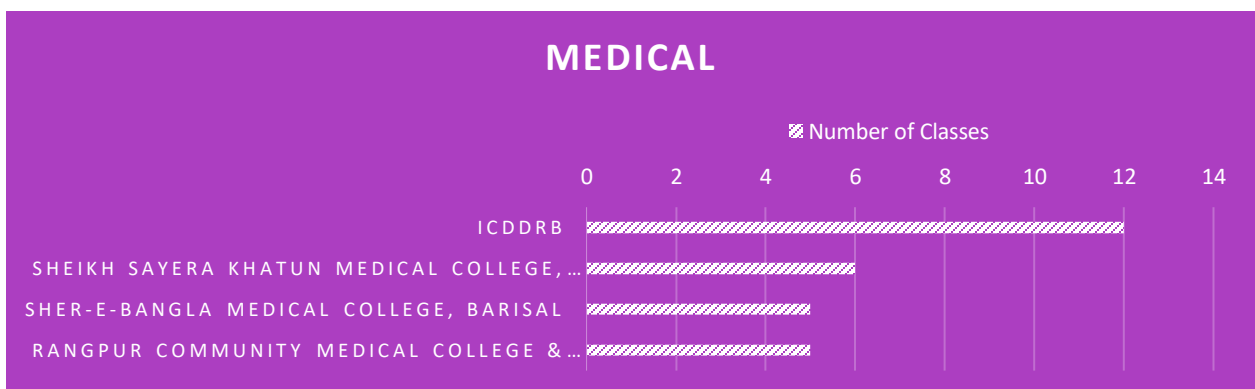


Figure 7: Medical Colleges' Video Conferencing Usage Graph

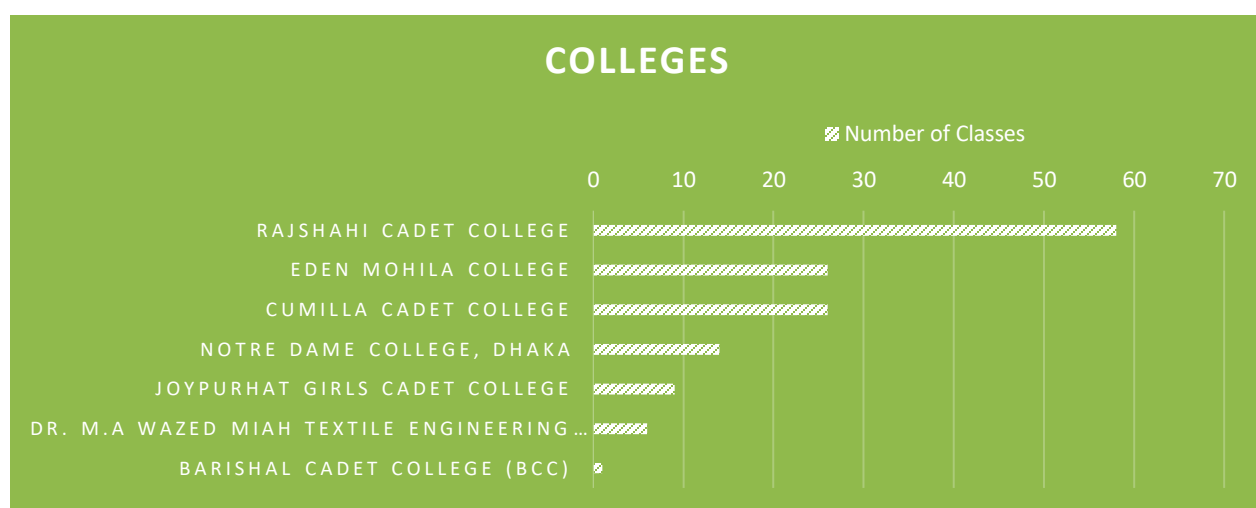


Figure 8: Colleges' Video Conferencing Usage Graph

6.4 BdREN Total Video Conferencing Usage Statistics

Table 15: BdREN Total Video Conferencing Usage Statistics

Total Number of Meetings/Classes	33636
Total Hour of Meetings/Classes	41065
Total Number of Participants	1349804

6.5 Top Ten Institutions in Video Conferencing

Table 16: Top 10 Institutions in Video Conferencing

Name of The Institution	Total Classes	Total Hours (hr:mm:ss)	Total Participants
Green University of Bangladesh	3284	3829:22:03	144343
Bangladesh University of Engineering & Technology (BUET)	2932	3314:36:48	143275
Ahsanullah University of Science and Technology (AUST)	2603	3195:34:09	134757
University of Dhaka (DU)	2082	2341:30:23	76922
BRAC University	1230	1665:44:45	46213
Dhaka International University (DIU)	844	884:43:58	34874
Jahangirnagar University (JU)	722	940:14:56	37849
Jagannath University (JnU)	682	809:56:00	38339
International Islamic University Chittagong (IIUC)	658	766:54:04	19894
National University (NU)	631	1186:56:30	42310

6.6 Month-wise Number of Classes, Total Class Hours and Participants

Table 17: Month-wise Zoom Usage Statistics

Year: 1 Year	Number Of Classes	Total Class Hours	Total Participants
January, 2023	22977	27382	805405
February, 2023	21532	25091	715736
March, 2023	23994	28191	909542
April, 2023	22420	24138	804011
May, 2023	25339	29979	934735
June, 2023	19,832	22426	687555
July, 2023	19,211	21730	677726
August, 2023	22,534	25651	783222
September, 2023	21,026	24200	712029
October, 2023	27,630	31734	1027394
November, 2023	65,485	79026	3089515
December, 2023	33636	41065	1349804

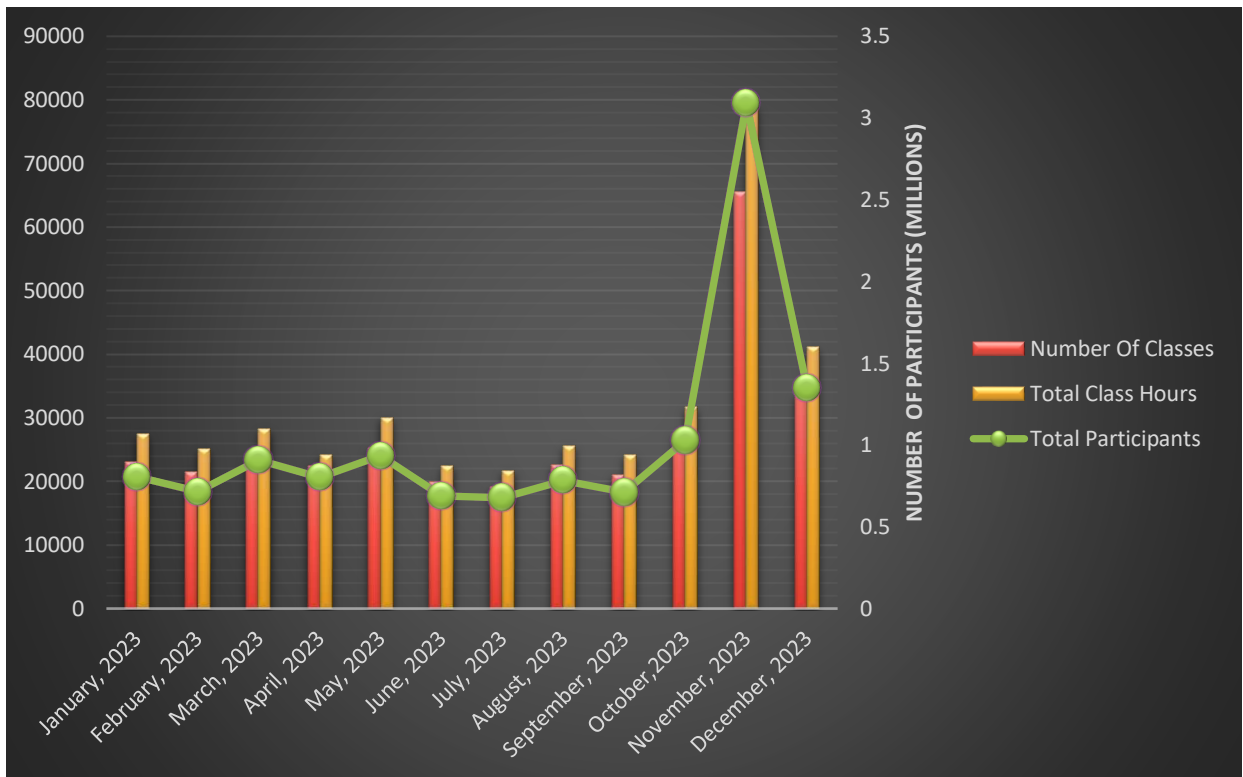


Figure 8: Month Wise Zoom Usage Graph in Last one year of 2023

7. INSTITUTION WISE MAX HPC Allocation

Table 18: Institution Wise Max HPC Allocation

University	Numbers of VM	Memory (GB)	CPU (Core)	Provisioned Space (GB)
BARI	1	8	16	500
BAU	4	332	84	7344
BoU	2	42	32	1124
BRAC	1	8	2	300
BRUR	4	144	104	2710
BSMMU	6	152	90	4334
BSMRAAU	3	32	20	1324
BSMRAU	6	154	90	6232
BSMRSTU	1	8	4	1024
BU	4	106	80	4096
BUET	7	600	128	6994
BUP	10	124	64	5410
BUTex	4	230	144	2648
CSTU	1	8	16	1000
CUET	2	40	24	1224
CVASU	4	92	26	6644
DU	36	2782	996	38220
DUET	4	64	64	4072
GU	1	128	32	1024
HAU	1	32	10	500
HSTU	2	96	32	5120
IAU	3	40	24	1500
IU	4	96	32	2124
IUS	1	4	4	200
IUT	1	8	2	200
JKKNIU	1	16	10	500
JnU	7	256	152	6620
JU	7	104	52	9616
JUST	12	272	208	8034

University	Numbers of VM	Memory (GB)	CPU (Core)	Provisioned Space (GB)
KU	4	192	82	7548
KUET	5	160	84	2824
MBSTU	17	748	470	13976
NBIU	2	16	32	1000
NIB	1	200	96	1024
NITER	1	8	4	1024
NSTU	4	80	42	3172
NU	2	12	16	300
PUST	3	128	48	2024
RU	6	136	52	18288
RUB	3	12	24	1324
RUET	4	66	38	1874
SAU	4	56	28	2648
SBAU	14	640	352	3250
SUST	6	104	32	6232
UGC	1	16	10	2048
World University	1	32	16	3072
KuriAU	1	8	4	500

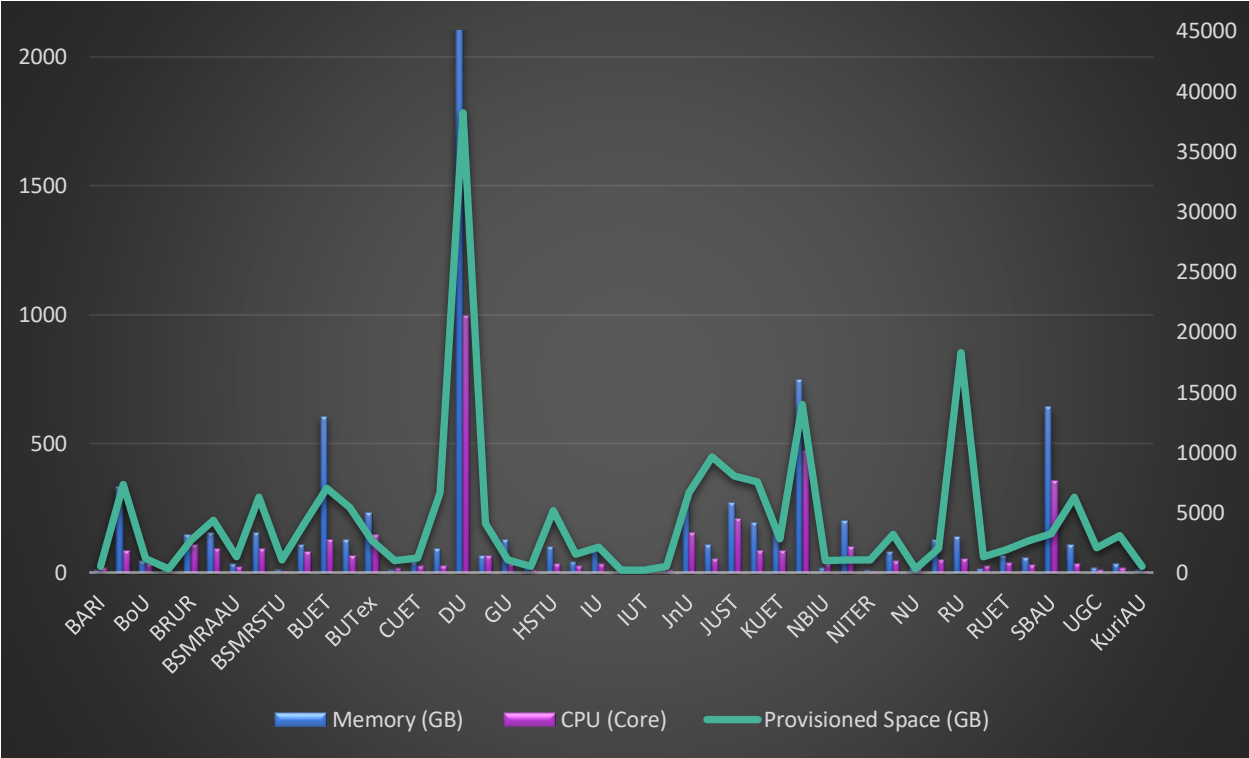


Figure 10: Institution Wise Max HPS Allocation

8. ACRONYMS

AUB	Asian University of Bangladesh	KU	Khulna University
AUST	Ahsanullah University of Science & Technology	KUET	Khulna University of Engineering & Technology
AUW	Asian University for Women	LUS	Leading University, Sylhet
BARD	Bangladesh Academy for Rural Development	MBSTU	Mawlana Bhashani Science and Technology University
BARI	Bangladesh Agricultural Research Institute	MIU	Manarat International University
BAU	Bangladesh Agricultural University	MMC	Mymensingh Medical College, Mymensingh
BDU	Bangabandhu Sheikh Mujibur Rahman Digital University	NINMAS	National Institute of Nuclear Medicine & Allied Science
BDREN	Bangladesh Research and Education Network	NITER	National Institute of Textile Engineering & Research
BFRI	Bangladesh Fisheries Research Institute	NKN	National Knowledge Network
BIDS	The Bangladesh Institute of Development Studies	NOC	Network Operation Center
BLRI	Bangladesh Livestock Research Institute	NREN	National Research and Education Network
BOU	Bangladesh Open University	NSTU	Noakhali Science and Technology University
BRACU	BRAC University	NSU	North South University
BRRI	Bangladesh Rice Research Institute	NU	National University
BRUR	Begum Rokeya University, Rangpur	PSTU	Patuakhali Science and Technology University
BSMMU	Bangabandhu Sheikh Mujib Medical University	PUST	Pabna University of Science and Technology
BSMRAU	Bangabandhu Sheikh Mujibur Rahman Agricultural University	RAM	Random Access Memory
BSMRSTU	Bangabandhu Sheikh Mujibur Rahman Science and Technology University	RMC	Rajshahi Medical College, Rajshahi
BTCL	Bangladesh Telecommunications Company Limited	RU	University of Rajshahi
BU	University of Barishal	RUET	Rajshahi University of Engineering & Technology
BUBT	Bangladesh University of Business and Technology	SAU	Sylhet Agricultural University
BUET	Bangladesh University of Engineering and Technology	SBAU	Sher-e-Bangla Agricultural University
BUP	Bangladesh University of Professionals	SBMC	Sher-e-Bangla Medical College, Barishal
BUTEX	Bangladesh University of Textiles	SOMC	Sylhet MAG Osmani Medical College, Sylhet
CMC	Chittagong Medical College, Chittagong	SSHMC	Shaheed Suhrawardy Medical College, Dhaka
CoU	Cumilla University	SSKMC	Sheikh Sayera Khatun Medical College, Gopalganj
CU	University of Chittagong	SSMC	Sir Salimullah Medical College, Dhaka
CUET	Chittagong University of Engineering and Technology	SUST	Shahjalal University of Science and Technology
CVASU	Chattogram Veterinary and Animal Sciences University	TB	Terabyte
DDC	Dhaka Dental College, Dhaka	UGC	University Grants Commission of Bangladesh
DIU	Daffodil International University	VU	Varendra University
DMC	Dhaka Medical College, Dhaka		
DU	University of Dhaka		
DUET	Dhaka University of Engineering and Technology		
EU	Eastern University		
EWU	East West University		
HSTU	Hajee Mohammad Danesh Science & Technology University		
ICDDR'b	International Centre for Diarrheal Disease Research, Bangladesh		
ICMAB	The Institute of Cost and Management Accountants of Bangladesh		
ICSB	The Institute of Chartered Secretaries of Bangladesh		
IU	Islamic University, Bangladesh		
IUB	Independent University, Bangladesh		
IUBAT	International University of Business Agriculture and Technology		
IUT	Islamic University of Technology		
JKKNIU	Jatiya Kabi Kazi Nazrul Islam University		
JnU	Jagannath University		
JU	Jahangirnagar University		
JUST	Jessore University of Science & Technology		

